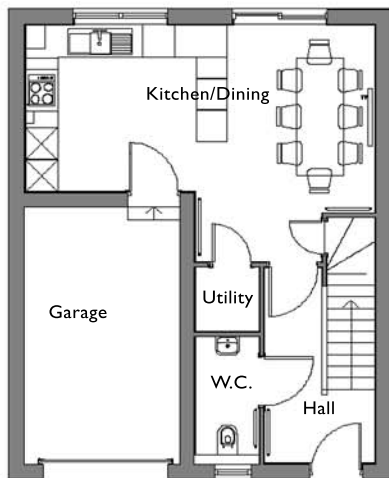


Homes by Harrison Grace

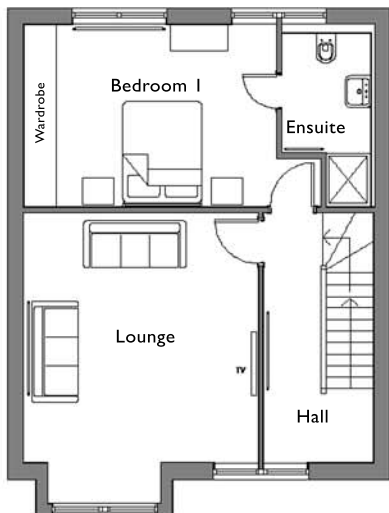


PLOT 4

Helvellyn

Total Floor Area - 152m²

Total Garden Area - 119m²

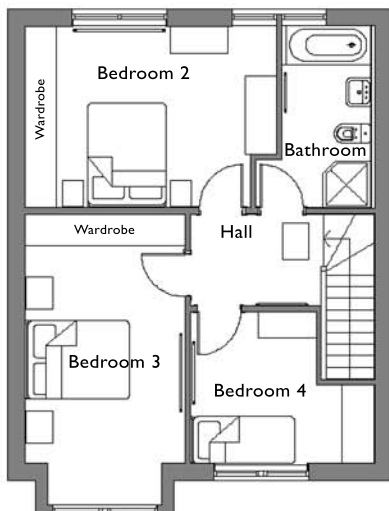


Kitchen/Dining - 24.7m²

Lounge - 22.9m²

Bedroom 1 - 17.3m²

Ensuite - 4.7m²



Bedroom 2 - 16.1m²

Bedroom 3 - 16.2m²

Bedroom 4 - 8.6m²

Bathroom - 6.3m²

The floor plans are provided to give a general indication of the layout of the property. Accuracy is not guaranteed and should not be relied on for any purpose. All measurements are approximate.